



# NEWSLETTER

June 1995

**TAMPA BAY CHAPTER of the  
RARE FRUIT COUNCIL INTERNATIONAL, Inc.**

EDITORIAL COMMITTEE: BOB HEATH, THERESA HEATH, ARNOLD STARK, LILLIAN STARK.

PRESIDENT: PAUL ZMODA

CHAPTER MAIL ADDRESS: 313 PRUETT RD, SEFFNER FL 33584  
(INCLUDING RENEWALS)

MEETINGS ARE HELD ON THE 2nd SUNDAY OF EACH MONTH AT 2:00 p.m.

NEXT MEETING: JUNE 11, 1995

MEETING PLACE: RARE FRUIT COUNCIL CLUBHOUSE, 313 PRUETT ROAD, SEFFNER. TAKE I-4 TO Exit 8 North, S.R. 579; go one mile to Pruett Road (see McDonald School sign). Turn right (EAST). Go one mile. See Clubhouse on left immediately past McDonald School.

PROGRAM: A SLIDE SHOW ON GROWING DOORYARD TROPICAL FRUIT IN FLORIDA WILL BE PRESENTED BY JENE HENDLEY, OWNER OF THE LOG CABIN GARDEN CENTER TOO IN ST. PETERSBURG. After the show we will have our usual tasting table. Please contribute.

A plant sale for RFCI members and friends, by our members, will follow in lieu of our usual plant raffle. If you have plants that you wish to sell, bring them (labeled, priced, and listed on a manifest). Set up will be in the fenced backyard before the meeting. Ten percent of all sales will go toward our treasury; 90% will go to the suppliers. So bring your checkbook and your friends. It will be a great opportunity to get nice fruiting plants at reasonable prices. Manifests will be available at the meeting.

Member provided plants will include:

Carambolas	Tamarind	Rollinia
Sapodilla	Fig	Cherimoya
Sugar Apple	Guava	Avocado
Soursop	Black Sapote	and many others

The following Club-owned trees will be available. You can simultaneously treat yourself and assist the Club by purchasing one of these beauties! Members only may take a ten percent discount from the listed price.

Atemoya (Gefner)	19.00	Mango (Kent)	25.00	Guava (Homestead	12.00
Avocado (Winter Mexican)	19.00	Red Sugar Apple	12.00	Supreme)	
Carambola (Srikambaugun)	17.00	Avocado (Brogdin)	19.00	Mango (Carrie)	25.00
Lychee (Muritous)	20.00	Carambola (Kari)	17.00	Mango (Haden)	25.00
Mango (Glenn)	25.00	Persimmon (Fuyu)	15.00	Fig (Celeste)	6.00

## Exciting Times:

by Charles Novak

We have a new Seed Chairperson - Elaine Sarrasin - let's give her a round of applause for volunteering. If you have any extra seeds, please donate them to our new Seed Chairperson.

The Fruit Data Base program is complete. If you are good at typing data on a computer keyboard, please assist us in putting the data into the computer. This is our chance to be a leader.

Our trip to Gene Joyner's home was very exciting. We saw many different fruit trees. We may have more trips in the future, but I need assistance with making the arrangements.

I still have copies of the book by Dr. Bobby Tee, Brunei Darussalam Fruits In Colour. This may be your last chance to obtain the book at cost.

## ***Peruvian Expedition by Dr Paul Beaver***

Paul Beaver has been conducting tours of the Amazon River in Peru for about 15 years. He has a nice rustic lodge on stilts in the Peruvian jungle, which is annually flooded during the rainy season when the Amazon overflows its banks and extends into the jungle. Despite the high water, this is an interesting time for touring the area, which must be done by boat, of course. It allows the tourists to cruise between the trees where they can see the flora and fauna in the overhead and fish swimming below.

Many people other than just tourists take advantage of his tours to explore the marvelous diversity of the Amazon jungle. Scientists searching for as-yet unnamed fruiting plants, ornamentals, medicinal plants, insects, animals and who knows what. Bird watchers, butterfly collectors, photographers, all have an interest in the little known areas of the South American jungle. His lodge is the focal point for excursions into the jungle and provides a comfortable place to stay during the tours. The lodge has kitchen and dining facilities, bathrooms and showers and excellent sleeping quarters. We were shown all this on slides, together with interesting pictures of the animals; kinkajous, sloths, tapirs, ocelots and others that are denizens of this jungle, as well as some of the most beautiful flowers, orchids and bromeliads in the world.

These are his lowland tours, but he is planning mountain tours beginning this summer up into areas that are virtually unexplored by white man. These areas must be reached by horse and can only be visited during the dry season.

His slides and talk touched only briefly on our favorite subject, fruiting trees, but all in all, it was an extremely interesting presentation.

## **Questions & Answers:**

by Charles Novak

We are starting a new Question and Answer section in our newsletter. I submitted the first two questions and answers. If you have questions that you would like answered submit them to me. I will select questions of general interest. Write: Charles Novak, 2812 N. Wilder Rd., Plant City, FL 33565.

How to set fruit?

Here is list of ways that may help you set fruit the next time your fruit tree is flowering:

1. Spray flower with 25 to 50 ppm of Gibberellic acid. This works, I have used Gibberellic acid for fruit set and for seeds germination.
2. Tomato Hold made by Chacon. I have used this product with mixed results.
3. Potassium nitrate or saltpeter - stump-killer. Us as a foliar spray on plant not doing well. (2 tablespoons per gallon of water - morning or evening).

Why my replaced peach tree is not growing?

Peach tree roots leave a toxicity in the soil. Most plants in the rose family, Rosaceae, release chemicals as a defensive mechanism that interferes with the growth of other plants. Black walnuts are famous for this. The only remedy is to replace a 4' square of the soil.

## Thank You Thank You Thank You

To Charles Novak for planning, organizing and conducting our group trip to West Palm Beach on Saturday, May 27. To Gene Joyner, for inviting us to visit his homestead. Also to Frank and Alice Burhenn for providing coolers of cold soft drinks, and to Lillian and Arnold Stark for the cupcakes.

Also to John Montano for obtaining more shopping carts for our sale use, and to Bob Heath and George Riegler for transporting them to the clubhouse.

## What's Happening

May-June, 1995

by Paul Zmoda

**WOW** ! Is it **HOT** outside! I hope this heat spell will not become an annual rite of spring. Despite what they are recording at Tampa International Airport (94-95°F), I showed 101°F on 5/17/95. I have three thermometers outside that are calibrated and all three registered 100°. What can one do to help the fruiting plants to hold flowers and fruit, or even just survive?

Use water wisely is one thing. Apply it to the soil-not the leaves, as this can cause burning. A constant supply such as through drip irrigation is great, rather than occasional flooding which can easily run off. Keep rings of soil around the trunks to help hold the water near the trees. A thick layer of mulch slows down evaporation and keeps root zones cooler.

Keep potted specimens out of direct sunlight, if possible, by moving them under large trees. An alternative is to provide shade with shade cloth, a woven fabric that lets some light through.

Wind has a serious drying effect, so erect wind baffles around plantings to shield them. Some drought resistant climbing vines could be trained to grow over teepees to shield your fruit trees underneath.

My current focus is on -surprise- the annona family. The large cherimoya failed to set any fruit with the first blooming flush, but

as it is still producing a flower here and there, there is still hope. I have plenty of pollen from all the sugar apples currently flowering and fruiting. I recently pollinated a cherimoya flower with sugar apple pollen and although still tiny, the resulting fruit has been hanging on for a week now - at least much longer than the others which fell off within three days. The Ilama (*Annona diversifolia*) has 15 nice fruit now, as big as golf balls in a pretty pastel pink color. I believe I've set a fruit on the Colombian sugar apple ('Anon') using Ilama pollen. If all goes well, the resulting seedlings should be interesting.

These twig-boring beetles have seriously de-branched all my custard apples, and have attacked sugar apples, cherimoyas, soursops, and even a pomegranate. One cherimoya was suffering but is now recovering after I probed the bore with a stiff wire and then sprayed with Malathion.

I've planted lots of squashes: Tahitian, Korean, and good old calabasa. Downy Rose Myrtle is putting on a fabulous bloom this year; I expect a good crop.

Seeds sprouting are: Soursop, Rollinia (some from my fruit), Cocona, Yellow Cattleya Guava, *Annona* hybrid 'F3', and Matrimony Vine.



The Palm Beach RFCI will be holding plant sales on July 22 and October 21, 1995  
at the Dreher Park South Pavilion in West Palm Beach.

## Fantastic Voyage to Unbelievable Acres and beyond!

By Lillian Stark

Early morning (and I really mean early: 3:30 AM) the alarm sounded urgently: Get-up, Get-up, Get-up, Don't be late, Don't be late. We fumbled into our clothes, finished packing our lunch, and grabbed our bag of important stuff (a collection of plastic bags, small bottles for seed, and labels, all put together the evening before). Into the car and then off to the Club house. Somehow early morning darkness seems much darker than mid-night darkness. But the car found its way and we arrived by 5:30 AM. There already were others waiting there, and the bus drove up a few minutes later.

We started loading ourselves and our gear into the bus, falling into the seats, grateful we had a professional driver who seemed much more awake than we were. Cars kept pulling into the parking area. A small miracle occurred: everyone showed up - *on time*! A few minutes after 6 the bus pulled out, and we were off on our long journey. After a while, the sun also woke up. People talked, or snoozed, or talked, or read the paper, or talked, or ate breakfast. Even with a brief rest stop, we arrived at our first destination before 11 A.M.

First stop: the Mounts Botanical Garden, at the West Palm Beach Extension Office. Our tour guide, a Master Gardener and member of the West Palm RFCI chapter, emphasized the fruiting species as she showed us around the garden. For some of our troop this was their first opportunity to see such large specimens, for others it was a visit with old acquaintances. We ate our lunches in the screened picnic area, and sang

happy birthday to member Bob Heath. Then into the bus again to visit *UNBELIEVABLE ACRES*.

Our gracious host, Gene Joyner, showed us around his "backyard": the most compact, extraordinary, beautiful, luscious planting many of us have ever seen. As Gene said, it is only about 2½ acres, but it seems like 40. Exquisite flowering varieties in the understory, magnificent large canopy trees, and fruiting species everywhere. We were amazed at the depth of the mulch, the density of planting, the degree of shade, and the fact that everything was so productive! The flowering and fruiting of Jaboticaba always fascinates me, and the fruit tastes so good. There was so much to see.

But we only had two hours to spend, and had to climb back into the bus, a weary, but happy group, loaded with bags of cuttings, seedlings, and seed. Collapsing into our seats, we settled down for our long trip home. People talked, or snoozed, or talked, or read the paper, or talked, or snacked. The talk was, primarily, of course, about plants: what we had seen, what we grew, what we hoped to grow, and techniques to grow and propagate plants. At the rest stop, lo and behold, members found wild Pawpaw and hickory and collected more seed and cuttings!

We finally arrived back at the clubhouse at about 7 PM, climbed into our cars and headed home. We each knew what we'd be doing the next day - no, not resting, but planting all the great stuff we'd brought home, and thinking about the next trip to.....?

The following people went on this fantastic voyage:

Joe Alessi, Jerry Amyot, Modesto & Isabel Arencibia, Monica Brandies, Phil Brown, Frank & Alice Burhenn, Laura Caradonna, Jeanette Coleman, Janet Conard, Scott & Susan Daniels, Roy & Darlene Grear, Vincent Harris, Bob & Terry Heath, Al Hendry, Henry Holloman, Ralph Johnson, Chris Knight, Buster Keaton, Nancy McCormack, P. John & Margaret Montano, Jim & Joan Murrie, Charles & Linda Novak, Samm Philmore, Frank & Linda Pupello, Sam & Judy Ramirez, George Riegler, Al Robets, Bill Ryland, Elaine Sarrasin, Lillian & Arnold Stark, Yuku Tanaka, Sue Wells, Paul Zmoda



## Raffle: May 1995

Plant Name	Donor	Winner
Orange Costa Ginger	Stark	Kass Scott-Rivera
<i>Garcinia dulcis</i>	Stark	Elaine Sarrasin
Capulin Cherry	Hendry	Phil Brown
Tropical Plum	Novak	F. Pupello
Tropical Plum	Novak	Dan Williams
Sugar Apple	Zmoda	Elaine Sarrasin
Natal Plum	Zmoda	?
Black Sapote	Zmoda	E. Musgrave
Rose Apple	Phil Brown	E. Musgrave
White Sapote	Phil Brown	Walter Vines
Jaboticaba	Phil Brown	Jerry Amyot
White Sapote (2)	Tony Ferreira	Nancy McCormack
Egg Fruit	Tony Ferreira	Kass Scott-Rivera
Jak Fruit	Tony Ferreira	J. Bell
Marmalade	Heath	Kass Scott-Rivera
Orange Berry	Heath	Tony Ferreira
Chaya	Heath	J. Murrie
Pineapple	Heath	Phil Brown
Pineapple	Heath	Elaine Sarrasin
Loquat	Heath	J. Murrie
Papaya	Heath	J. Boyd
Flame Flower	Heath	?
Custard Apple	Heath	Tony Ferreira
Tree Basil	Heath	?
Organic Tomatoes	Kass Scott-Rivera	Heath
Marinated Tomatoes	Kass Scott-Rivera	Heath
<i>Dioscorea asiatica</i>	?	J. Murrie

## Tasting Table: May 1995

Stark: Surinam Cherries

Ferreira: Raspberry Cake

Burhenn: Fudge Nut Brownies

Wente: Raisin Puff Cookies

Kass Scott-Rivera: Strawberry Cordial, Marinated Tomatoes

Musgrave: Guava Jam & Crackers

Nancy McCormack: Muffins

Pearl Nelson: Guava Paste

## New Members:

John & Betty Gibson 2910 Lake Stall Lane Tampa, FL 33618

**A Guatemala Fruit and Flower Safari** is being led by Gene Joyner, July 19-29, 1995. This trip is organized by Tom Economou's Follow Nature Trail, Inc. For more information call (305)285-7173. Members who have been on tours led by Tom & Gene highly recommend them.

## ***Recipe***

### Banana Cookies

3/4 cup butter	1/2 tsp nutmeg
1 cup sugar	1-1/2 cups rolled oats
1 egg	1 cup mashed ripe bananas
1-1/4 cup flour	1 cup chopped dates or raisins
1/2 tsp baking soda	1/2 cup chopped nuts
1/2 tsp salt	

Cream butter and sugar together. Beat in egg. Sift flour, soda, salt and nutmeg together and add to creamed mixture, along with remaining ingredients. Mix well and drop by heaping teaspoons on greased cookie sheet. Bake in 400 degree oven for 10 to 12 minutes.

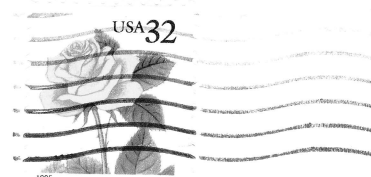
\* \* \*

### *Condolences...*

*The Club wishes to offer its condolences to Edith Freedman upon the recent passing of her husband, Abe.*

\* \* \*

**RFCI Tampa Bay  
313 Pruett Rd  
Seffner FL 33584**



**FIRST CLASS MAIL**

P. JUDSON NEWCOMBE  
314 DEER PARK AVE.  
TEMPLE TERRACE, FL 33617

