

NEWSLETTER

NOVEMBER 2002

TAMPA BAY CHAPTER of the
RARE FRUIT COUNCIL INTERNATIONAL, Inc.

EDITORS: BOB HEATH, THERESA HEATH, CHARLES NOVAK, LINDA NOVAK, JIM LEE, SALLY LEE

PRESIDENT: JIM LEE

Website: www.rarefruit.org (CHARLES NOVAK)

MEETINGS ARE HELD THE 2ND SUNDAY OF THE MONTH @ 2:00 PM.

NEXT MEETING: NOV 10

MEETING PLACE: UNIV. OF SO. FLORIDA, BUILDING WCC (WESTSIDE CONFERENCE CENTER).
SEE MAP PAGE 02-80.

PROGRAM: OUR SPEAKER THIS MONTH IS SUSAN THAYER OF MAXIJET INC. She will be discussing cold protection using microjets, which should be of interest to us who have cold sensitive plants in the ground.

We will meet @ 2:00 in our regular meeting place at USF in WCC, the Westside Conference Center. See map page 02-80. We will also have our fabulous tasting table & exciting raffle. Bring something to the meeting and socialize.

Bus Trip to Gene Joyner's Unbelievable Acres Botanical Gardens in

West Palm Beach, Saturday, November 2. If you have not signed up for this trip-and would like to go on the bus-please do so as soon as possible. You may contact Charles Novak at (813)754-1399, Bob Heath at (813)289-1068 after 6 P.M., or Sally Lee at (813)982-9359 after 6 P.M. The cost to members is \$20 per bus seat and payment should be made by October 31. The bus will pick up at the DAV Hall in St. Petersburg and then at the Brandon Town Center (see Maps in this newsletter for times and locations). If you prefer to drive your own vehicle you can meet us at Mounts at the County Extension Service on Military Trail. We should arrive there at about 10:00 A.M. See map for directions and location. Please bring your lunch and snacks. The club will have drinks available. The bus should return to Brandon about 6:30 P.M. and to St. Petersburg about 7:30 P.M. If you sign up for this trip and find you cannot go after all, please notify Charles, Bob, or Sally as soon as possible at the above phone numbers.

NEW MEMBERS:

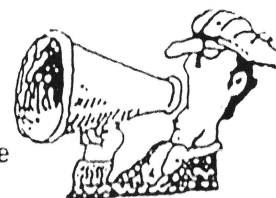
Ted & Cherry Carson	Valrico	Dougal & Magella Kirby	Tampa
Gregory Charles	St. Petersburg	Michael McDuffie	Tampa
Sylvia Dixon	Thonotosassa	Bill Marler	Tampa
Juliet Ismert	Tampa	Daniel Rapp	Tampa
Mike Judd	Tampa	Ronald & Gini Watkins	Plant City
Susin Tippie & Jean Pattison	Plant City		

A warm *Welcome* and we hope to see you at the November meeting.

Parafilm for grafting is now available to club members. Contact Charles Novak (813)754-1399.

Member's Corner:

If anyone from the Lakeland area is planning to drive to Gene Joyner's Unbelievable Acres Botanical Gardens on Nov. 2, Pat McGauley is interested in carpooling. Please contact Pat at (863)646-1130.





MHH - Mental Health
CPH - College of Public Health
MDA - Moffitt Dialysis
WCC - Westside Conference Center. This is where we will meet.
ECR - Entrance to Conference Room

DIRECTIONS TO MEETING ROOM:
From Bruce B Downs turn right on Holly St., the 2nd traffic light north of Fowler just past the V.A. Pedestrian Overpass. Turn left on S. Cypress St., then left on W. Banyan to parking lot beside the Westside Conference Center. Enter at back door to conference room.



WHAT'S HAPPENING
OCT-NOV 2002
by PAUL ZMODA

Plenty of rain has made our plants really look good and grow. I keep adding compost and horse manure to trees & vegetable garden areas which have been seeded for our traditional Fall bounty. As the veggies sprout and grow to the proper sizes, they are transplanted to their permanent beds. Two earthboxes have been refreshed and planted with pepper and tomato. The summer crops are going strong: Italian cucuzzi squash are giving us lots of "baseball bats" and a single roselle plant is producing a large crop which is destined for Holiday gift jellies.

Citrus are nice and green and flushing new growth - some of which are new varieties top-grafted onto older trees. The mango is showing plenty of new growth including top-grafted bud wood. Bananas are growing at a fantastic rate.

I made lots of new air layers of olives and tea. I sheared all tropical berry bushes to shape and keep at manageable sizes. Trapping pesky animals is a daily (or nightly) chore. One captured opossum was a completely white albino with pink eyes. He was so clean and cute and friendly looking that I hated to relocate him, but he was eating so many persimmons. The twig girdling beetles are attacking the pecan tree again, as expected, but my wrapping of vulnerable limbs with aluminum foil is protecting those vital branches from damage.

I have given up trying to grow any more mushrooms because spells of dry weather kill them off. Not to worry, for I've found dried shiitake mushrooms at the Oriental market which are very cheap. Once soaked in water, they are as good as fresh.

New plantings: wild plums, pineapples, avocado, olive, bananas

From the President
Jimmy Lee



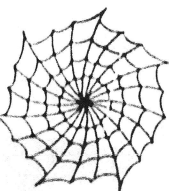
Thanks to those club members who helped with the USF Botanical Garden Fall Plant Sale. I'm sorry that I was not there for the sale. I have been told that the weather was nice (a little too hot on Saturday) and many fruiting plants and cups of fruit juice were purchased by the public. There was a wide variety of fruiting plants available for sale-some were brought in by our club members.

Winter will be here soon and you will not want to miss the November 10 meeting. Our speaker is from Maxijet, Inc. and will be talking about Cold Protection using microjet misters.

Once again we thank Dr. and Mrs. Burns Creighton for inviting the club to have the Holiday Social (Dec. 8) at their beautiful home in Lithia. Our members have always enjoyed this party and look forward to it each year. New members will not want to miss out on this treat!!

Scheduled Programs/Events:

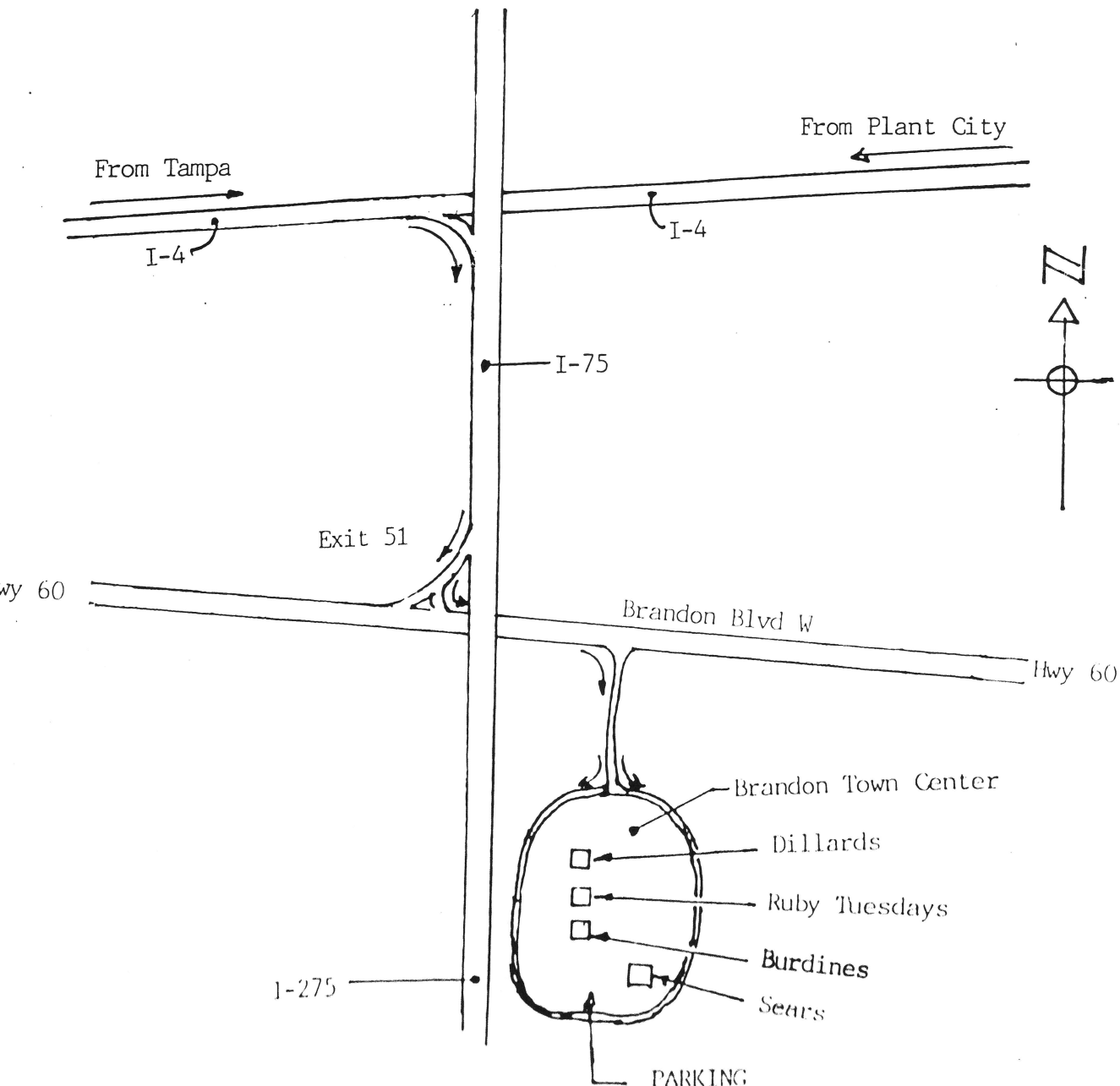
- November 2: Bus trip to Gene Joyner's Unbelievable Acres in West Palm Beach
- November 10: Program will be on Cold Protection using microjets
- December 8: Holiday Social at the Creighton Farm in Lithia
- January 12: Chris Rollins, Director of the Fruit & Spice Park in Homestead, FL, will present a program on the Fruits of Southeast Asia



WEST PALM BEACH Bus Trip: 2nd Pickup Location: BRANDON TOWN CENTER MALL

Parking lot near road between Burdines & Sears. DIRECTIONS: from Tampa: East on I-4 to I-75 South. Take Exit 51 to Hwy 60/Brandon Blvd. East on Brandon Blvd. Turn right onto Brandon Town Center Drive (big mall sign - just past Barnes & Noble). Turn right or left at first stop sign. Parking is between Burdines & Sears. Park out near the road. Please be at this pickup location before 6:15 AM as the bus leaves at that time. BRING YOUR OWN LUNCH.

There are still bus seats available. If you would like to join us on the bus please call Linda Novak (813) 754-1399 or Bob Heath (813)289-1068. This cost is \$20 per seat.



FREEZE PROTECTION FOR PLANTS

from 1985 Newsletter

by WILL UNRUH

With so many past winters of damaging freezes, let's hope we're going to get a freeze-free one for a change. However, just in case it doesn't work out that way, I'd like to share some successful experiences in protecting tender plants from hard winter freezes. These successes are based on application of the principle used in the patented protectors our group sold in 1984.

That the principle works was amply shown by its success in protecting a newly planted citrus grove near our home during the Jan. 1984 freeze. The grove had been completely equipped with these same protectors just before the freeze. With warm weather's arrival it was clear the owner had made a good investment... the small trees survived the freeze beautifully!

I had similar good results applying the protector's principle in home made form to numerous plants. The protector's principle uses the high heat of fusion and heat capacity of water. This means a relatively large amount of heat must be removed from water for it to freeze and furthermore, until a given container of water is completely frozen, its temperature doesn't go below 32°F. The commercial protector includes 2 slender containers of water inside the insulator next to the plant's trunk. The insulation slows down the heat loss from the air around the plant's trunk to the cold outside air and the water volume keeps it from going significantly below freezing as long as there is still unfrozen water in the containers.

The same principle can be applied easily to other plants which don't have size or trunk shapes for which the commercial protector was designed. All you need is containers of water right next to the plant, free space for the air to circulate between the plant & the water containers, and an insulating covering over the whole business to slow down the heat loss as much as possible. The containers of water are almost like local heaters with their thermostats set at 32°F. The good thing about "doing your own" this way is that one can partially compensate for poor insulation in the covering (e.g. blankets vs. styrofoam in the commercial unit) by including more water next to the plant.

The water can readily be put next to the plant using any of a number of convenient forms such as buckets, plastic milk jugs, 2 liter plastic soft drink containers, jerry jugs, etc. The larger the volume of water used, the better. The container used should not have insulating walls since good heat transfer between the water & the surrounding air is needed. The milk jugs and 2 liter containers have shapes which conveniently permit tying them along the plant trunk or on supporting stakes to provide better protection farther up in the plant. Note that the water must be in containers - just watering the ground is relatively ineffective since the water then can't exchange heat with the air easily.

In summary:

- 1) Put lots of water in containers right next to the plant - the more the better.
- 2) Cover the plant and water as best you can to both provide insulation and minimize air flow between inside & outside.



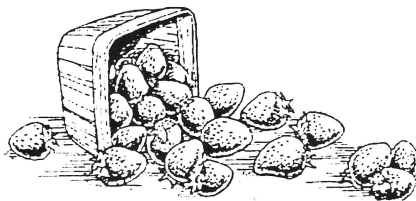
STRAWBERRY-GLAZED FRUIT SALAD

- 1 quart fresh strawberries, halved
- 4 firm, sliced bananas
- 1 can pineapple chunks, drained (20 oz.)
- 1 pouch or jar strawberry glaze (16 oz.)

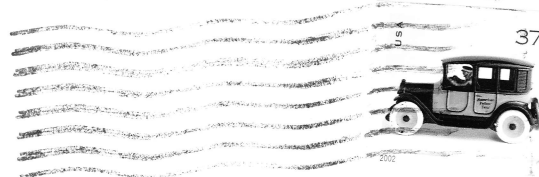
In a large bowl, gently toss strawberries, bananas & pineapple. Fold in the strawberry glaze. Chill for 1 hour.

Yields 6 - 8 servings.

Note: Strawberry glaze can usually be found in the produce section at the grocery store.



RFCI Tampa Bay Chapter
4109 DeLeon St
Tampa FL 33609



FIRST CLASS MAIL

P. JUDSON NEWCOMBE
314 DEER PARK AVE.
TEMPLE TERRACE, FL 33617

Happy Halloween

3361744143 32