

April 2011



RFCI

TAMPA BAY CHAPTER of the
RARE FRUIT COUNCIL INTERNATIONAL, INC.

<http://www.rarefruit.org>

Meetings are held the second Sunday, 2:00 P.M.
at the Tampa Garden Club, 2629 Bayshore Blvd.

Note: There is no meeting in April.

⌘ Upcoming Programs and Events ⌘

April 9-10: USF Botanical Garden Spring Plant Festival

May 8: Gene Joyner of Unbelievable Acres; "Growing Tropical Fruit Plants"



Calling All Volunteers!
**USF Botanical Garden Spring Plant
Festival**
April 9 and 10, 2011



Spring has sprung (finally), and it's time for the annual plant festival! We need your help. You can participate by bringing plants to donate or sell, you can help set up or you can volunteer to help with the sale. Parking is free but admission is \$5.00. The Club will reimburse workers who participate. *Please plan to join us.* Please contact Charles or Linda Novak for more information.

⌘ USF Botanical Garden Annual Spring Plant Festival ⌘

The USF Spring Plant Festival is an important fundraiser. Members are invited to attend, to assist in the sale, to sell plants, to enjoy the camaraderie and to visit other exhibits.

We need volunteers to help on Friday, Saturday and on Sunday.

Setup - Friday, April 8th: Our participation will begin around 2:00 PM Friday afternoon, April 8. We need volunteers to help raise tents, set up tables, and to unload and arrange plants.

Early Morning Prep' - Saturday, April 9: The Botanical Garden will be open from 7:00 AM to 9 AM for our final preparations. Traffic will be one way — in the front gate and out the side gate.

The front gate will close at 8:30 AM on both Saturday and Sunday. After that time, volunteers may enter, on foot, by the south gate until 9:00 AM.

The gates will open to the public starting at 10:00 AM on both days.

The Festival will close at 4:00 PM on Saturday and 3:00 PM on Sunday. After 4:15 on Saturday and after 3:40 PM on Sunday, we can bring vehicles in to re-supply or remove plants. Vehicles cannot be left in the Botanical Garden. Parking is across the street from the front entrance.

President: Paul Branesky

Editor: Gloria Sciuto; **Support:** Bob & Paula Heath; **Production/Distribution:** Charles & Linda Novak

We would like members to follow these guidelines to avoid misunderstanding, confusion and errors.

∞ Guidelines for Participation in the USF Plant Sale ∞

- Each member selling plants must submit a manifest listing their plants and prices. This manifest must be given to a designated member for verification.
- Each plant must have a label with the name of the plant, the price and the seller's initials. It would be helpful if the seller puts a colored slash or dot on the label for easy identification.
- **Please note that members cannot sell citrus plants, non-fruiting plants or herbs.**
- Sellers are responsible for their plants. If you are unable to be there both days of the Sale, you should ask a member to handle your plants for you.
- Sellers should not lower the prices of their plants without advising the designated member before changing the price on the manifest.
- Members selling plants should be willing to help unload and load Ray's truck and help with the setup and breakdown of the sales area (if physically able).
- When the sale is over on Sunday afternoon, sellers will inventory their unsold plants, enter on their manifests the number of plants that remain unsold and then submit their manifests to the designated member. Members should then remove their unsold plants.

∞ Guidelines for Tagging and Buying Plants ∞

- During the sale, members who want to purchase Ray's plants may do so at the regular price listed. Plants purchased at the regular price should be placed in the club's "designated area" until members can take them home.
- If "working" members wish to purchase plants at a discount after the sale, they may do so by tagging their selected plants **after 2:00 P.M. on Sunday. Plants must not be removed from the sales area, as they are still available for purchase by the public until the end of the sale.** Plants may not be tagged prior to 2:00 P.M. and placed in the area behind the cashiers or elsewhere. The tagging of plants is done by tying brightly colored flagging tape on the plants. Please write your name on the flagging tape.
- **Only after the final inventory of Ray's plants has been completed on Sunday may members move their flagged plants from the sales area and pay the designated person for the plants.**

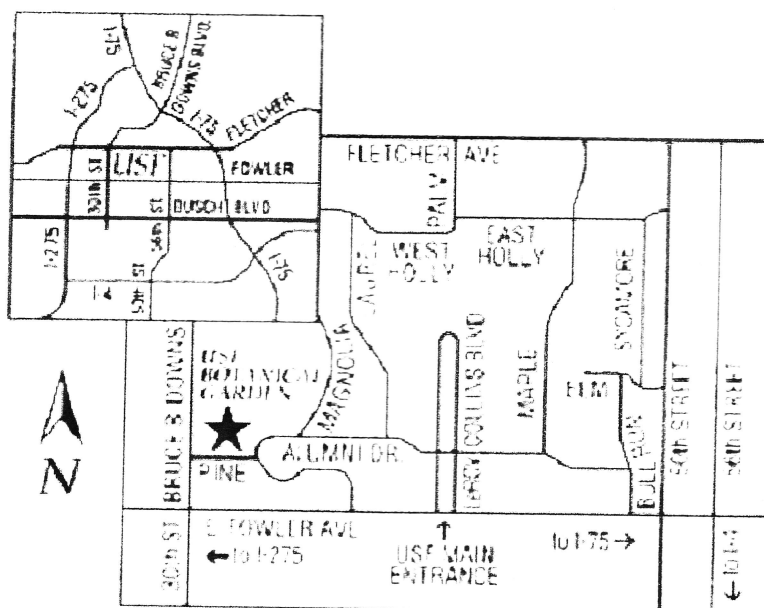
SPRING PLANT FESTIVAL
April 9 & 10 Sat. 10-4 Sun. 10-3
\$5 ADMISSION; MEMBERS & CHILDREN (12 YRS) FREE

Saturday Talks:
 11 am } **Herbal Remedies & Plants**
 12 pm } **for a Healthier Life**
 1 pm }
 2 pm } **Audubon Society Bird Talk**

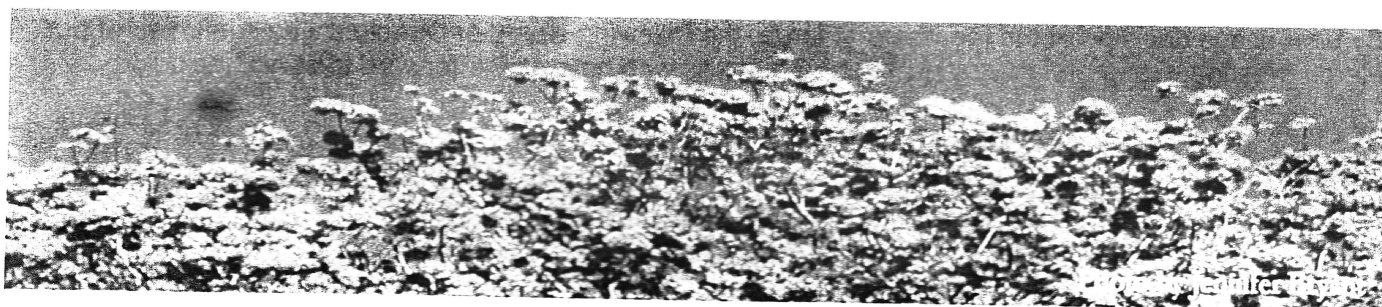
Medicinal Garden
Grand Opening!

☞ Directions to the USF Botanical Garden Plant Festival ☛

This map was copied from the USF website:



Directions: The Garden is located near the southwest corner of the USF Tampa campus, at the intersection of Pine and Alumnus Drive. From I-275, take Fowler Ave. east to Bruce B. Downs Blvd. and turn left. Go north one block to Pine and turn right. Go east one block to the first traffic light and turn left. Go north one block to the garden entrance on left.



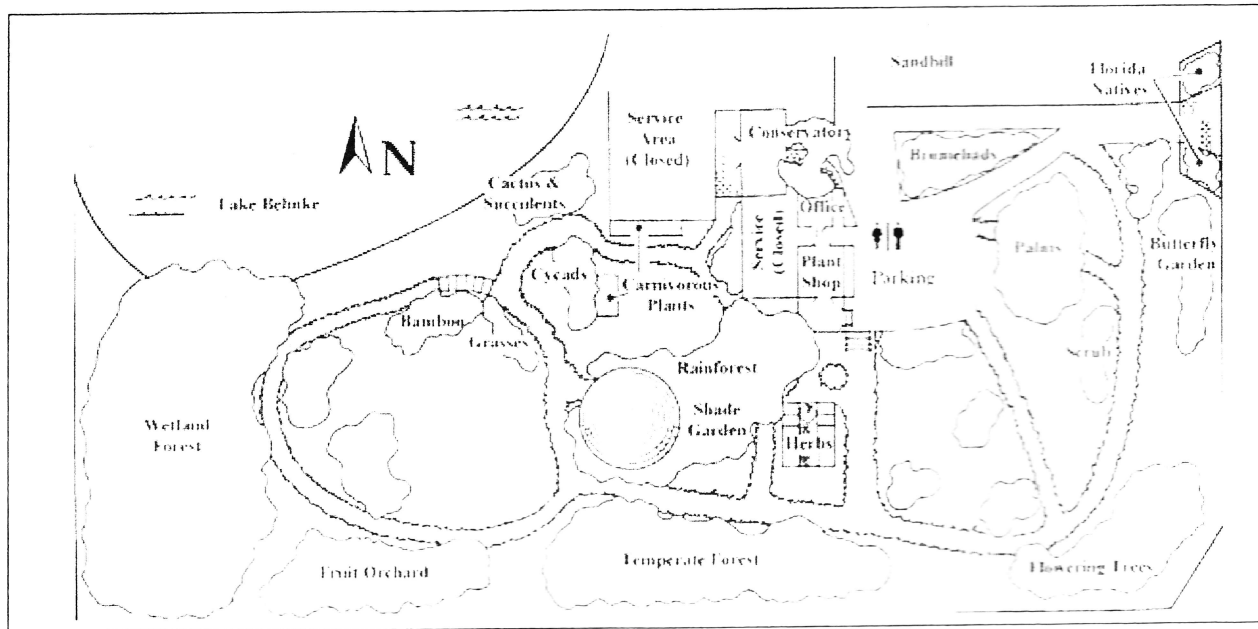
☞ Editor's Note ☛

Last month, we heard Tammy Kovar, biologist and owner of Biological Tree Service of Sarasota, speak on growing trees and plants with Mycorrhizal fungi. Because of space, we cannot include a summary of her talk in this issue. Her talk will be summarized in the May 2011 issue.

☞ USF Botanical Garden Trail Map ☞

11-28

This map was copied from the USF website:



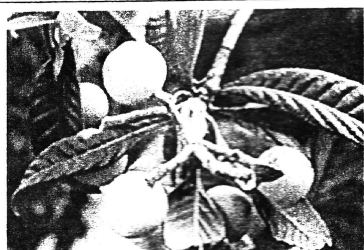
☞ Welcome to Our Newest Member ☞

⊗ Adam Psihos of Tarpon Springs ⊗

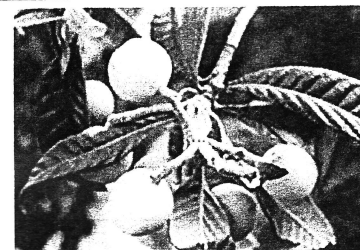
☞ 2011 Board of Directors ☞

By unanimous decision of the members at large, the following Board of Directors was confirmed at our March meeting. Congratulations and Thank You to all who have come forward to serve, including:

- Paul Branesky – President
- Jimmy Lee, Charles Novak, Jerry Amyot, Bob Heath – V.P.
- Susan McAveety – Treasurer
- Linda Novak – Secretary
- Andrew Hendrickson
- Sally Lee (Plant Locator)
- Fred Engelbrecht
- Verna Dickey
- Thom Scott
- Judith Cimafranca
- Bill Vega
- Bob Gerstein



∞ What's Happening ∞ by Paul Zmoda



Our loquats weren't harmed by the freezes this year. They have set a nice crop thanks to the abundance of honeybees. To get these fruits to attain their maximum size, you should thin them. The fruit you leave won't have to compete for leaf sugars as with a crowded crop. I snip off half of each cluster and entirely remove the weaker-looking clusters.

Two of our largest Paw Paws — not yet a foot tall — have bloomed profusely. Our largest specimens' flower buds are just now swelling.

Last fall, I used the gold old "nail method" for flower induction on our "Hood" pear tree, now 13 years old, which has never borne fruit. Now, many flowers appeared at the appropriate time instead of randomly throughout the year. Later on, there are many small pears seen that are enlarging.

I also "nailed" our grafted Mayhaw tree, which had never bloomed. It is currently blooming very well up and down most of the larger branches with white flowers typical of others in the Rosaceae family. I'm looking forward to the apple-like fruits that are said to make the best jelly. This nail method really works, readers. I prefer galvanized nails to help prohibit infection at the wound site.

Many bunch grape varieties are being rooted for upcoming projects, such as grafting. I am refining my techniques for better success.

New plantings: cucumbers, pole beans, okra, squash, blueberries.

∞ Vivian Murray ∞

The Tampa Bay RFCI and the entire exotic fruit world have lost a good friend and an authority on the propagation of rare and tropical fruit trees.



On Monday, March 21, Vivian Murray passed away. Vivian and Bob Murray started the Treehouse Nursery on Pine Island many years ago. They were devoted to the propagation and distribution of exotic fruiting plants.

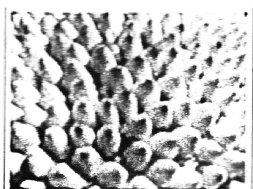


Our club members have visited the nursery many times and we will miss Vivian as a friend and partner in the growth of our hobby.

❧ March's Tasting Table ❧

Thank you to the following folks for their tasty offerings and to all those who did not sign the sheet.
Members who donate food may receive a ticket for the plant raffle.

Name	Item	Name	Item
Vega	Rice & chicken stew	Coronel	Palitaw (sweet rice dumplings)
Scott	Stir fry surprise	Johnston	Blueberry cobbler
Sweet	Fruit salad	McAveety	Mango salsa
Golden	Buttermilk Pie	Lee	Strawberries, Dump cake
Young	Watermelon, pineapple	Amyot	Banana bread with icing
Maranto	Banana cream, spaghetti squash with chicken	Willis	Roasted sweet potato, balsamic vinegar/fresh rosemary
Prenraj	Pakora (vegetarian fritters)	Ferreira	Potato, tomato, mustard green salad
Shigemura	Tourtierre (Canadian meat pies)	Willis	Roasted sweet potato, balsamic vinegar/fresh rosemary
Clarke	Zucchini bread, brownies, stewed codfish, chicken		
Novak	Chicken jambalaya, fresh fruit platter, strawberry-banana bread with strawberry cream cheese,		
P&M Branesky	Fresh squeezed orange juice, sweet tamarind; Pancit (Philippine style fried noodles)		
Sawada	Green fruit & Jello; green lentil cake on green tea cookies		
Cimafranca/Beeker	Almond-poppy seed mini muffins		



❧ 2011 Rare Fruit Conference ❧

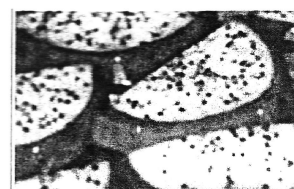
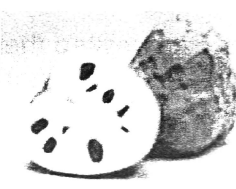
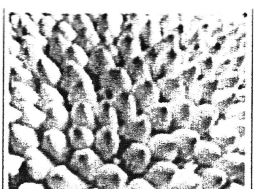
Place: Fruit & Spice Park, Homestead, FL

Wednesday, July 6: Pre-conference activities, registration, self-guided nursery, farm tours.

Thursday, July 7 - Sunday July 10: Conference, trips, lectures and tours

Monday, July 11: Post-conference tour – Unbelievable Acres Botanical Gardens

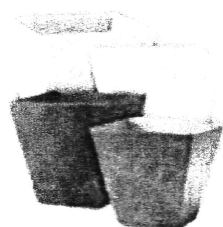
For more information, go to the club's website: www.rarefruit.org.



∞ RFCI Plant Exchange ∞

Thanks to all of our donors. Members who donate plant(s) may now receive a ticket for the raffle.

Plant	Donor	Winner
2 Pineapple	Bob Heath	Carolyn Haack
2 Loquat	Bob Heath	Roshan Premraj
Yellow jaboticaba	Bob Heath	Carolyn Haack
2 Kei apple	Bob Heath	Vic Gamboni
Haas avocado seedling	Bob Heath	Judith Mancuso
Chaya spinach	Bob Heath	Shane & Mayra Smith
Burbank cactus	Bob Heath	
2 Loquat	Thom Scott	Bob Young
2 Rosemary	Thom Scott	
Window box	Thom Scott	Gloria Allman
8 Pink pummelo	Charles/Linda Novak	Bob G., Bob Heath, George
Ginger	Fred Englebrecht	
Large Pink guava	Paul Branesky	
3 Orange berry	Ed Musgrove	Judy Cimafranca
Cholesterol spinach	Ed Musgrove	
Surinam cherry	Ed Musgrove	Marilyn Whitfield
Cardboard palm	Ed Musgrove	
Baskets	Lori Maranto	
Fig	Tony Ferreira	
Curry tree	Tony Ferreira	Carolyn Haack
Shallots	Shane & Mayra Smith	Mike Sweet
Yellow onion	Shane & Mayra Smith	
Garlic	Shane & Mayra Smith	
Iris	Julie Badias	Marilyn Whitfield
Iris	BJ Vosburott	
Mysore raspberry	Jim Porter	
Honeybell oranges	Sally Lee	
Dusty Miller	Gloria Allman	

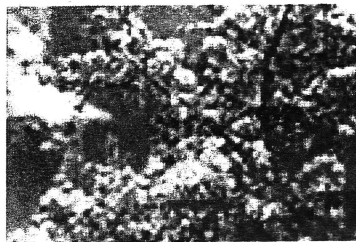


∞ Members' Corner ∞

Wanted: Small square pots

Please contact Charles Novak at (813) 754-1399 or
charles.novak@gmail.com

5 Steps to a Climate-Friendly Garden



1. Minimize carbon-emitting inputs.
2. Don't leave garden soil naked.
3. Plant trees and shrubs.
4. Expand recycling to the garden.
5. Think long and hard about your lawn.



Copied from the Climate-Friendly Gardener and the Union of Concerned Scientists;
<http://www.cas.usf.edu/garden/docs/climate-friendly-gardener.pdf>

Plant Sale, April 8, 8 AM – Noon. Vocational Horticulture Program of Falkenburg Road Jail, 520 N. Falkenburg Rd., in the open lot north of the new administration building, adjacent to the Windhorst stoplight entrance. All plants sold on a first come first served basis. No plants sold before 8 AM. All proceeds go into the program.



3361784149

P. JUDSON NEWCOMBE
 314 DEER PARK AVE.
 TEMPLE TERRACE, FL 33617

FIRST CLASS MAIL

Tampa Bay RFCI
 2812 N. Wilder Rd.
 Plant City, FL 33565-2669

TAMPA, FL 335
 SABBIT PETERSBURG, FL
 30 MAR 2011 PM 7 L

